



**Office of Children  
and Family Services**

# **Health and Safety Training**

**Competencies for Becoming a Family or Group  
Family Day Care Provider**

**2016 Curriculum Revision Webinar**

**June 23, 2016**

# Training Acknowledgement

This training is provided by the Professional Development Program through a contractual agreement between the NYS Office of Children and Family Services and The Research Foundation for the State University of New York at the University at Albany.

# Welcome!

- PDP's Health and Safety Support Team:
  - Torie Seeger, Joan Myer, Kathleen Sanford, Claudia Melendez
- H&S Monitors
  - Pat Beck, Dora Anderson, Winell Jones
- PDP Health & Safety Trainer Website:
  - <https://www.ecetp.pdp.albany.edu/fortrainers.shtm>
- OCFS Website
  - <http://ocfs.ny.gov/main/childcare/default.asp>

# Agenda

- Program Updates
- Curriculum Delivery
- Curriculum Revisions
- Languages other than English
- Program Policy Reminders
- DCC / SACC Training
- Questions



# Program Updates

- Revisions to current curriculum
  - Input from trainers
  - Feedback from licensors and registrars
  - Observations of training
  - Preparation for DCC/SACC Health & Safety training
- Tests have been reduced from 15 to 10 questions
- Addition of an trainer's resource section
- New training site guidelines



# Training Site Requirements

- Enough space *per participant* (usable space does *not* include stairways, hallways, cabinets, shelves, etc.).
- Adult-size tables and chairs (chairs with tablet arms are *not* acceptable).
- Table for your materials.
- Large enough TV or projection screen so everyone can see.
- Open wall space suitable for posting flip charts;
- Access to a sink with running water;
- Good lighting.
- Free from distractions (intercoms, people walking into or through the space, etc.)

# Curriculum Delivery

- Training must be presented in the order in which it is written ***but please don't read it verbatim!***
- The PowerPoint must be used.
- The only modifications permitted in the curriculum are the activities. If you have a different activity that meets the same objective, you may substitute that activity.
- Will use existing video until new version is complete.



# Video Conversion Chart

	VIDEO #	TITLE	Former Number
Module 1: Your Primary Tool - The Regulations	1	Introduction	1
	2	Indoor Safety	2
Module 2: Creating a Safe Environment	3	SIDS and SUID	23
	4	Outdoor Safety	3
	5	Emergency Preparedness & Fire Safety	25
Module 3: Capacity and Supervision	6	Day Care Registration (Blue Card)	7-
	7	Competent Supervision	4
Module 4: Nutrition and Food Safety	8	Infant Feeding	13
	9	Food Safety	14
Module 5: Protect and Prevent	10	Your Role as a Mandated Reporter	20
	11	Child Abuse and Maltreatment Indicators	21
	12	Reasonable Cause to Suspect	22
	13	Abusive Head Trauma (formerly known as Shaken Baby Syndrome)	24
	14	Conducting a Daily Health Check	10
Module 6: Creating a Healthy Environment	15	Germ Transmission	15
	16	Hand Washing	16
	17	Cleaning and Sanitizing	17
	18	Safety Precautions Relating to Blood	18
	19	Diapering	19
Module 7: Developing Health Care Policies and Procedures	20	Developing Health Care Policies and Procedures	5
	21	Developing Your Health Care Plan	6
	22	Child in Care Medical Statement	7-
	23	Immunizations	8
	24	Lead Poisoning	9
	25	Administering Medication	11
26	Planning for Emergencies	12	



# Reordering of Modules

## MODULE 1:

### Your Primary Tool – The Regulations (2.5 hrs)

- Unit A: Introduction
- Unit B: Using the Regulations
- Unit C: The Injury Triangle
- Unit D: Prevention/People/Prediction

## MODULE 2:

### Creating a Safe Environment (2.5 hrs)

- Unit A: Indoor Safety
- Unit B: Outdoor Safety
- Unit C: Fire Safety

## MODULE 3:

### Capacity and Supervision (1.5 hrs)

- Unit A: Program Capacity and Adult/Child Ratio
- Unit B: Supervision
- Unit C: Day Care Registration Form

## MODULE 4:

### Nutrition and Food Safety (1 hr)

- Unit A: Nutrition
- Unit B: Food Safety

## MODULE 5:

### Protect and Prevent (2.5 hrs)

- Unit A: Child Abuse & Maltreatment
- Unit B: Preventing Abusive Head Trauma  
(Shaken Baby Syndrome)
- Unit C: Daily Health Check

## MODULE 6:

### Creating a Healthy Environment (2.5 hrs)

- Unit A: Hand Washing
- Unit B: Cleaning and Sanitizing
- Unit C: Safety and Bodily Fluids
- Unit D: Diaper Changing and Toileting

## MODULE 7:

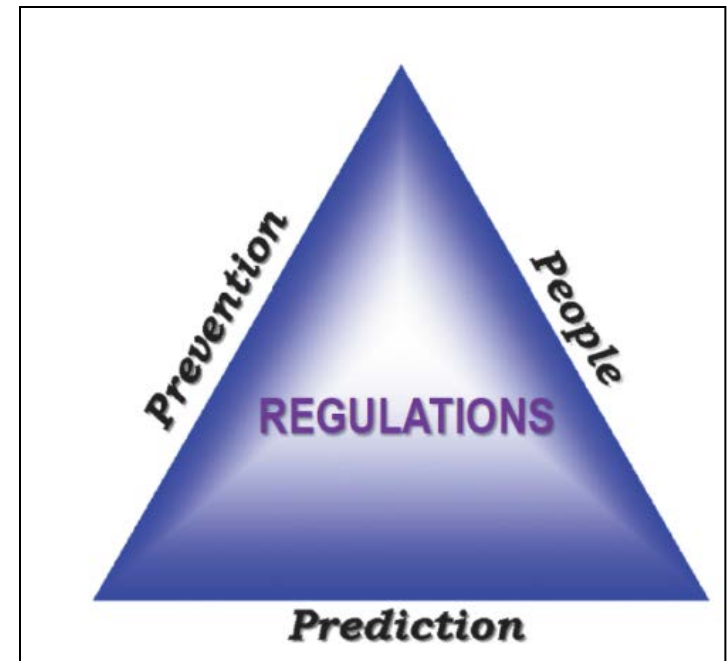
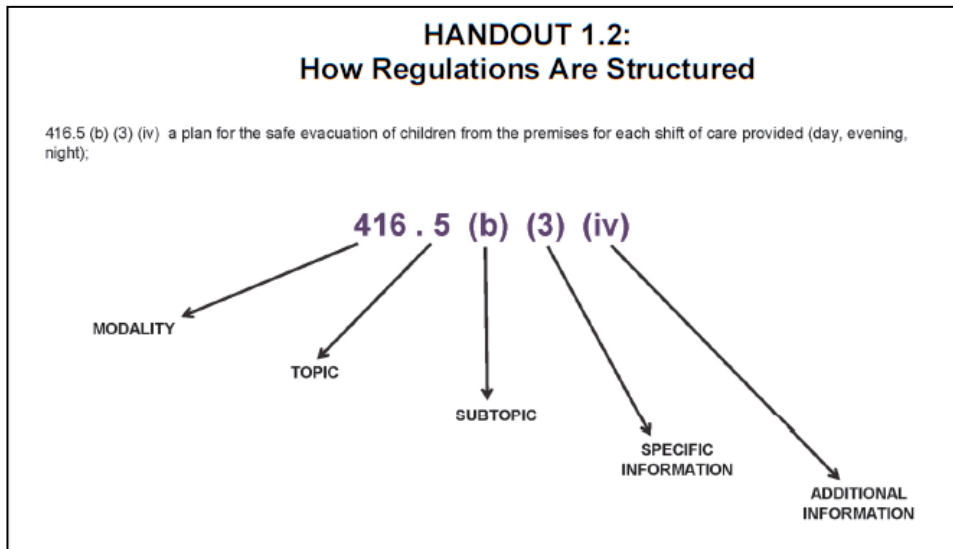
### Developing Health Care Policies & Procedures (2.5 hrs)

- Unit A: Health Care Plan
- Unit B: Preparing to Enroll Children
- Unit C: Planning for Emergencies
- Unit D: Closing Activity



# Curriculum Change Highlights – Module 1

- *Emphasis* on how to use the regulations



# Curriculum Change Highlights – Module 2

- SIDS/SUID (Sudden Unexpected Infant Death) is an indoor safety issue
- Fire Safety



# Curriculum Change Highlights – Module 3

- New home for capacity and supervision

OCFS-LDSS-0792 (1/2005) FRONT

NEW YORK STATE  
OFFICE OF CHILDREN AND FAMILY SERVICES  
**DAY CARE REGISTRATION**

**PHOTO OF CHILD  
(Optional)**

Child's Full Name: \_\_\_\_\_

Does your child have any allergies?  Yes  No  
If Yes, what is your child allergic to? \_\_\_\_\_

Children who have special health care needs are those who have chronic physical, developmental, behavioral or emotional conditions expected to last 12 months or more and who also require health and related services of a type beyond that required by children generally. If your child does have special health care needs please discuss these with your child-care provider.

Child's Source of Medical Care/Primary Care Physician's Name: \_\_\_\_\_

Telephone Number: \_\_\_\_\_

Child's Source of Dental Care/Dentist's Name: \_\_\_\_\_

Telephone Number: \_\_\_\_\_

Name Of Medical Care Facility/Hospital: \_\_\_\_\_

Telephone Number: \_\_\_\_\_

Would you like information on Child Health Plus?  Yes  No

	RELATIONSHIP	CONTACT NAME	TELEPHONE NUMBER DURING CHILD CARE	OTHER TELEPHONE NUMBER (Check type)
<b>EMERGENCY DATA</b>	_____	_____	_____	_____ <input type="checkbox"/> Pager <input type="checkbox"/> Cell <input type="checkbox"/> Other
	_____	_____	_____	_____ <input type="checkbox"/> Pager <input type="checkbox"/> Cell <input type="checkbox"/> Other
	_____	_____	_____	_____ <input type="checkbox"/> Pager <input type="checkbox"/> Cell <input type="checkbox"/> Other
	_____	_____	_____	_____ <input type="checkbox"/> Pager <input type="checkbox"/> Cell <input type="checkbox"/> Other

# Curriculum Change Highlights – Module 4

- Included food as a choking hazard
- Encourage participation in the CACFP



# Curriculum Change Highlights- Module 5

- Updated terminology for Shaken Baby Syndrome to Abusive Head Trauma (AHT)
- Daily Health Check from prior Module 3



# Curriculum Change Highlights – Module 6

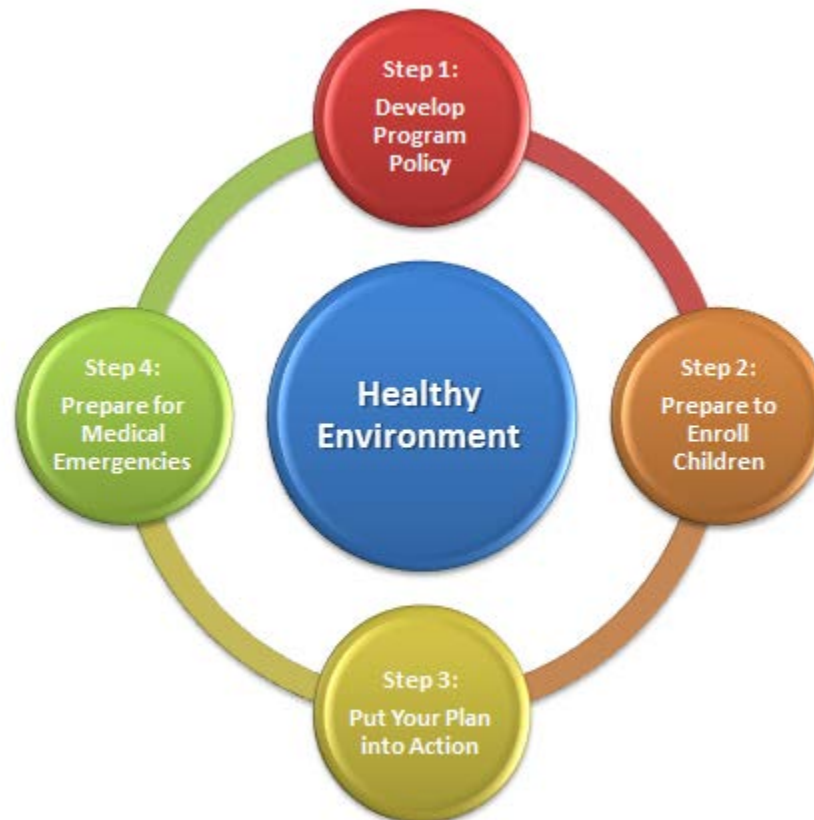
- Moved before Health Care Plan





# Curriculum Change Highlights – Module 7

- Curriculum incorporates the Health Care Plan





# Effective Date

- All trainers must be using the new curriculum by August 1, 2016.
- Use old video until the new one is completed.



# Languages Other Than English

- Spanish
- Chinese-Mandarin



# Program Policy Reminders

- Schedules must be submitted 10 days prior to start of training
- Rosters must be submitted within 5 calendar days of course completion
- Course participants must make-up any missed coursework within 60 days
- Applicants not licensed or registered within 2 years of completing the H&S must repeat (416-417.14 (a))
- All H&S trainers must be registered with Aspire
- All trainers must train or fully participate in co-training the course at least twice per year.

# DCC / SACC Training

- There are 12 two-day TOTs scheduled between September and December 2016.
- Only existing H&S FCC/GFCC trainers are eligible to apply to attend.
- As of 6/23/16 do not know who, if anyone, will be required to take the DCC/SACC H&S.
- Does not apply to NYC DCC as they are under Article 47.

# Questions?



Questions or comments about this training?  
Contact the Professional Development Program  
518-442-6576  
[healthandsafety@albany.edu](mailto:healthandsafety@albany.edu)

*Thank you!*